

HYC-M1, HYC-M2

Cable gland

- Applied as the water-proof and spinning-proof when extending the cable from various machine tools.
- PF 1/2 cover fixing type nut
- Nut tightening structure by the seal rubber and stuffing washer



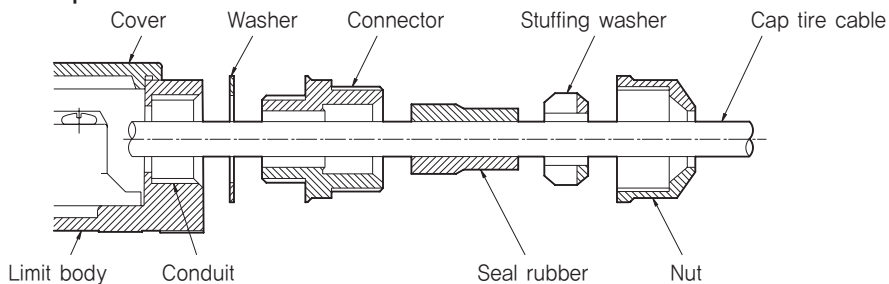
Specification

Model	Screw	Applying cable	Sealing rubber diameter	Applicable device
HYC-M1	PF 1/2	Cabtyre cable	Ø8	HY-M900, HY-LM900
HYC-M2			Ø11	HY-LS800
Material	Polycarbonate (PC)			

Dimension (unit : mm)

Appearance	Dimension
<p>HYC-M1</p>	
<p>HYC-M2</p>	

Example



Control switch
Combination display light

Power switch
Main switch
Cam switch

Limit switch
Micro switch

Hoist switch
Foot switch
Mono level switch

Sign tower
Signal light

Buzzer
Terminal block
Fuse holder

Control box
Cable connector

Discontinued Products