



ENGINE STARTER RELAY

ESR1.0



DESCRIPTION

ESR 1.0 control unit is used for starting, stopping and controlling any diesel or gasoline engine.

The control unit provides full protection of the engine parameters, display the state of the system with front panel indicators and offer an efficient management of the engine.

In this model, engine cranking can be made manually with the front panel mounted key switch.

ESR 1.0 protects the engine against the failures by monitoring oil pressure, engine temperature, auxiliary fail inputs and charge alternator failure.

FEATURES

- Micro-controller based design
- Pre-glow heater control
- Low oil pressure failure protection
- High engine temperature failure protection
- Auxiliary input protection
- Charge alternator failure warning
- Fuel / Start solenoid output control
- Alarm output contact
- Excitation current feed for charge alternator unit
- Small Dimensions (72mmx72mm)
- Easy connection via rear panel screw terminal sockets
- High reliability concept design (MTBF > 50.000 hours)
- Front panel LED indicators
- IP-52 front panel protection class
- CE compliant
- 9-36Vdc supply voltage

PROTECTION FUNCTIONS

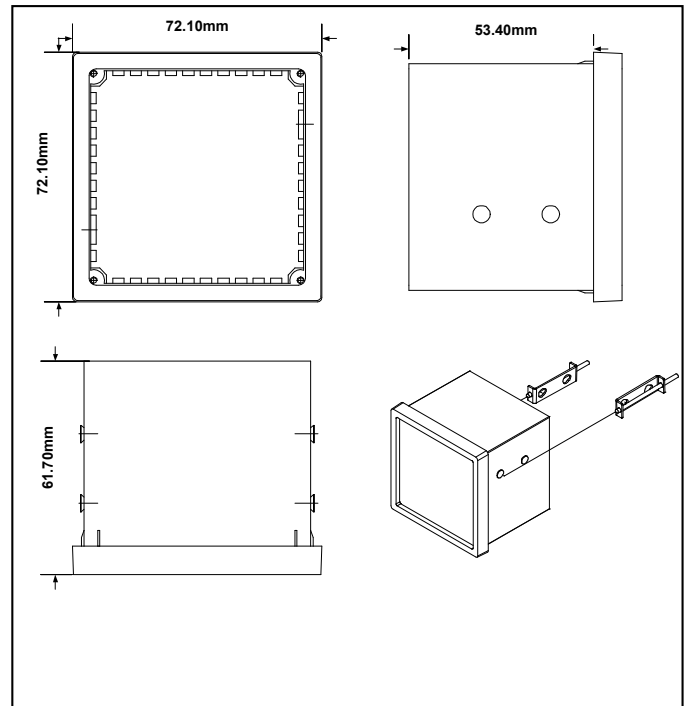
- Low oil pressure protection
- High engine temperature protection
- Auxiliary input protection
- Charge alternator failure protection

ESR 1.0 ENGINE STARTER RELAY

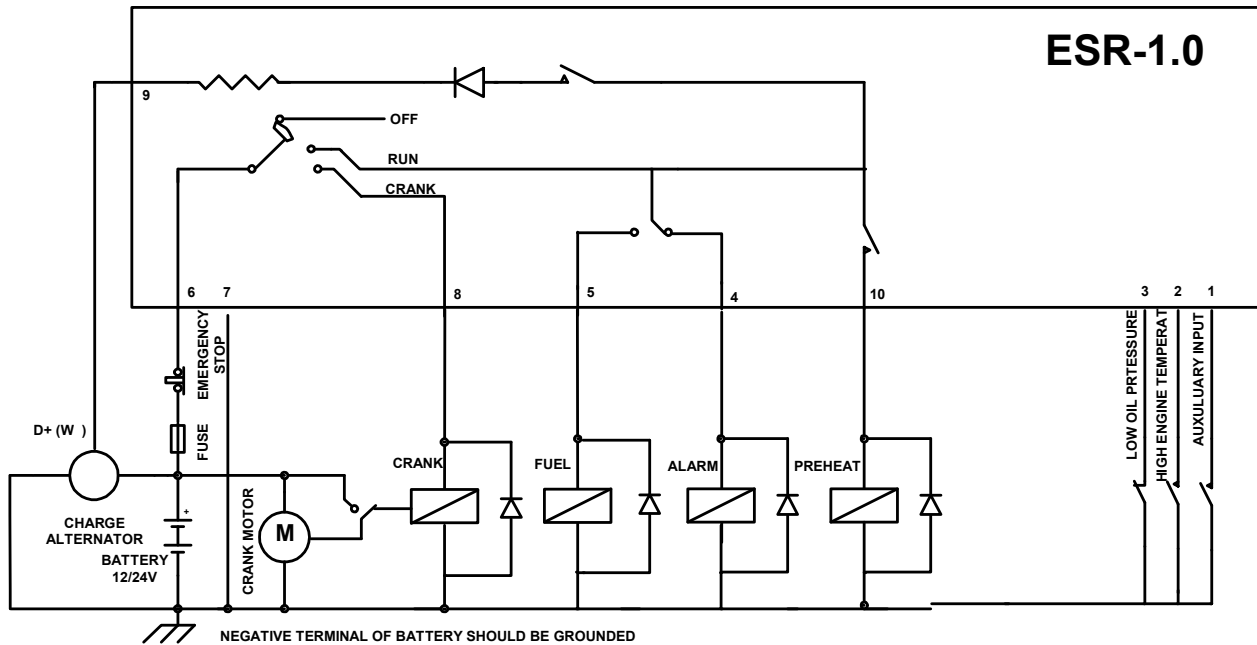
SPECIFICATIONS

DC Supply	9-35VDC 30mA (off state) 130mA (maximum current drain)
Operating Temperature	-10°C / +70°C
Relative Humidity	10% - 95% non-condensing
Outputs	Fuel and Start relay contact rating: 16A/30VDC Preheat relay contact rating: 6A/30VDC
Additional Outputs	For ESR 1.0 Alarm output contact rating: 16A/30VDC
Excitation Current	125mA @ 12VDC 250mA @ 24VDC
Connection	Screw terminal type socket on rear panel
Housing	High temperature proof NORYL SE1 GFN2
Protection Class	IP 52 (Front panel protection class)
Weight	250 gram for ESR 1.0
Dimensions (WxHxD)	72x72x62 mm
Panel cut out	67x67mm
Mounting Installation	Front panel mounted with rear metal screw fixings

MOUNTING AND INSTALLATIONS



CONNECTION DIAGRAM



EN-KO Electronic Control Systems

10006 Sok. No:64 A.O.S.B Cigli-Izmir/TURKIYE
 Tel: +90 (232) 3767806 (Pbx)
 Fax: +90 (232) 3767792
 E-Mail: info@enkoelektronik.com
 Web: www.enkoelektronik.com